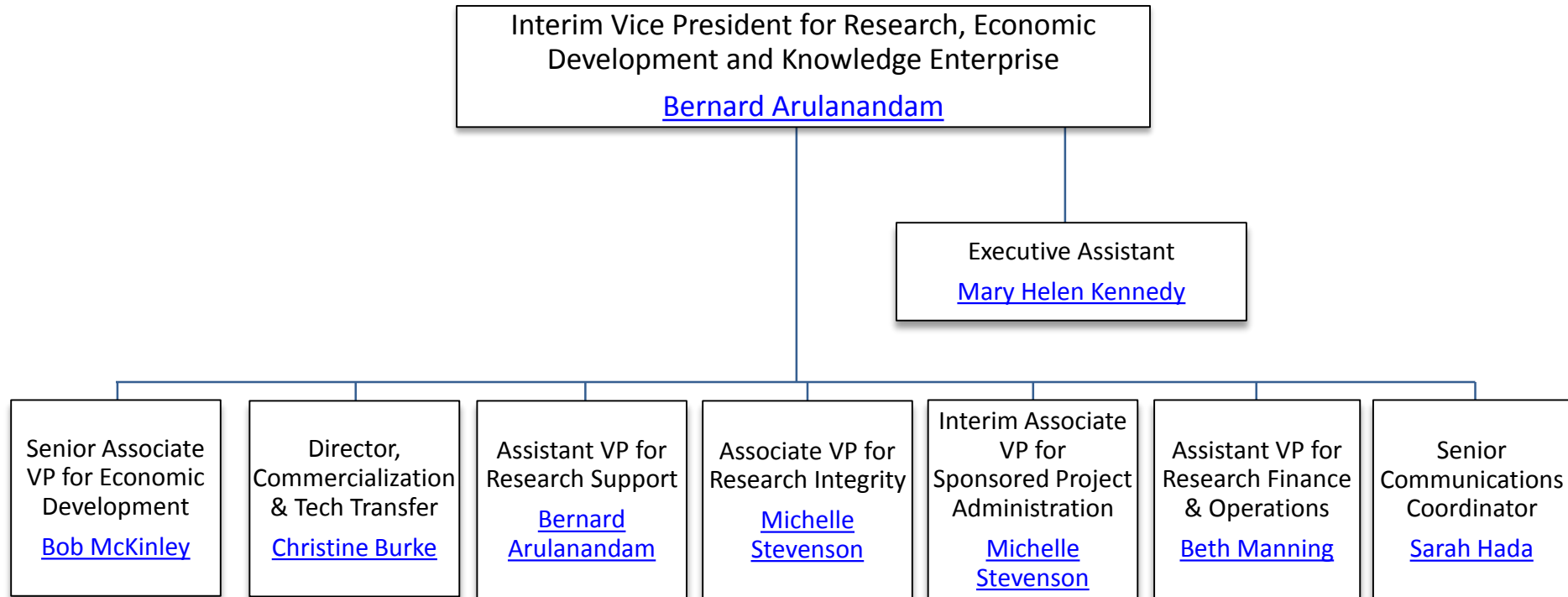
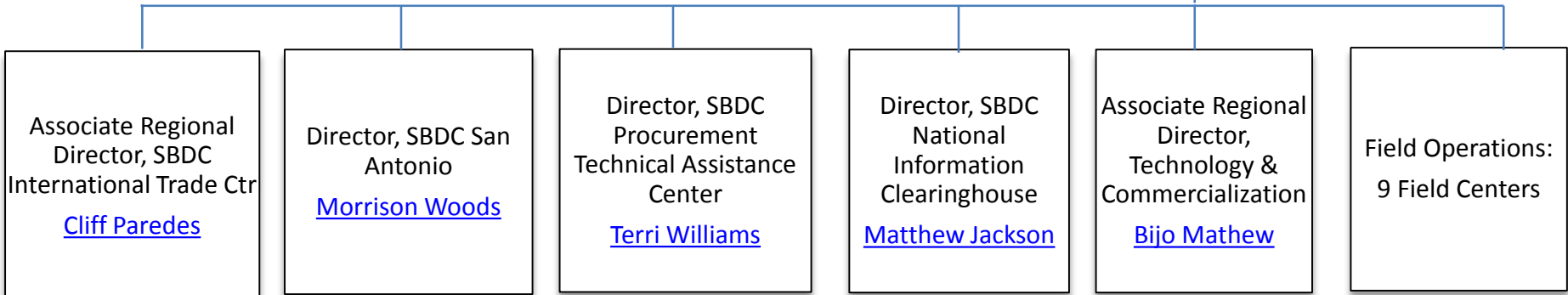
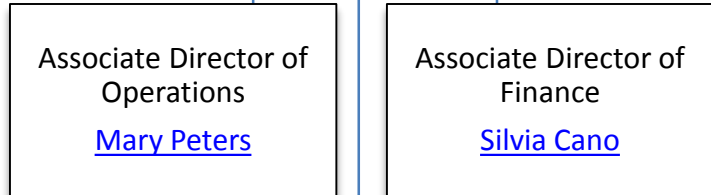
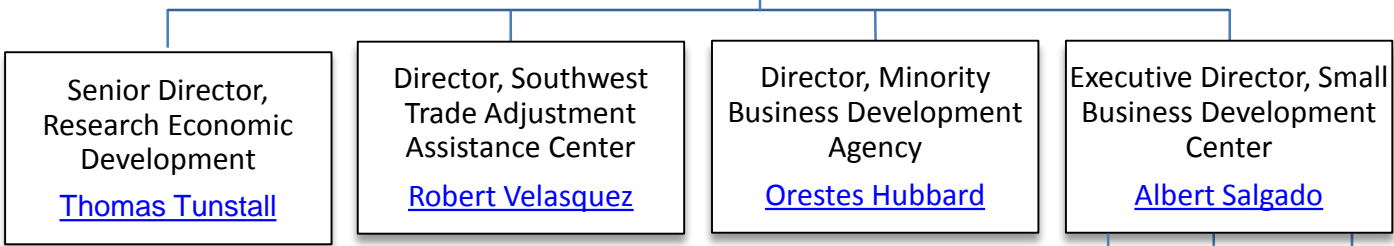
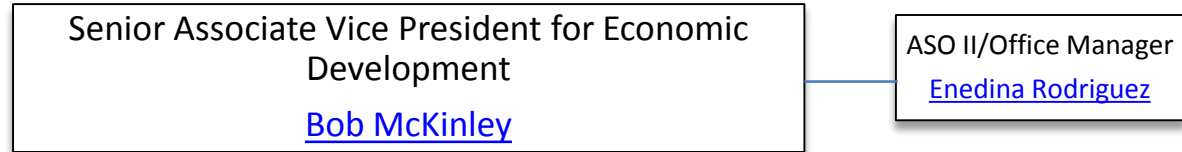


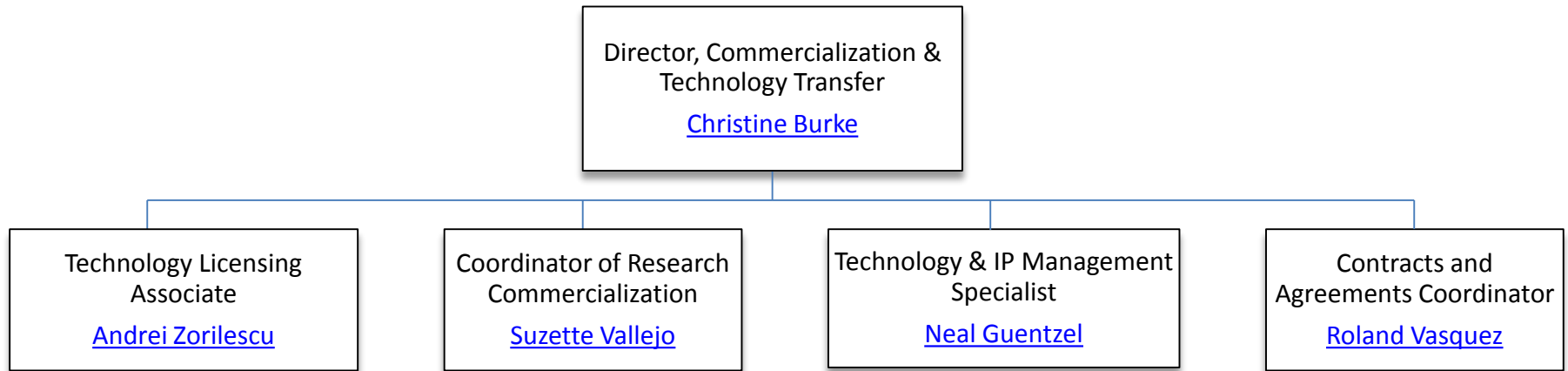
# Office of the Vice President for Research, Economic Development and Knowledge Enterprise



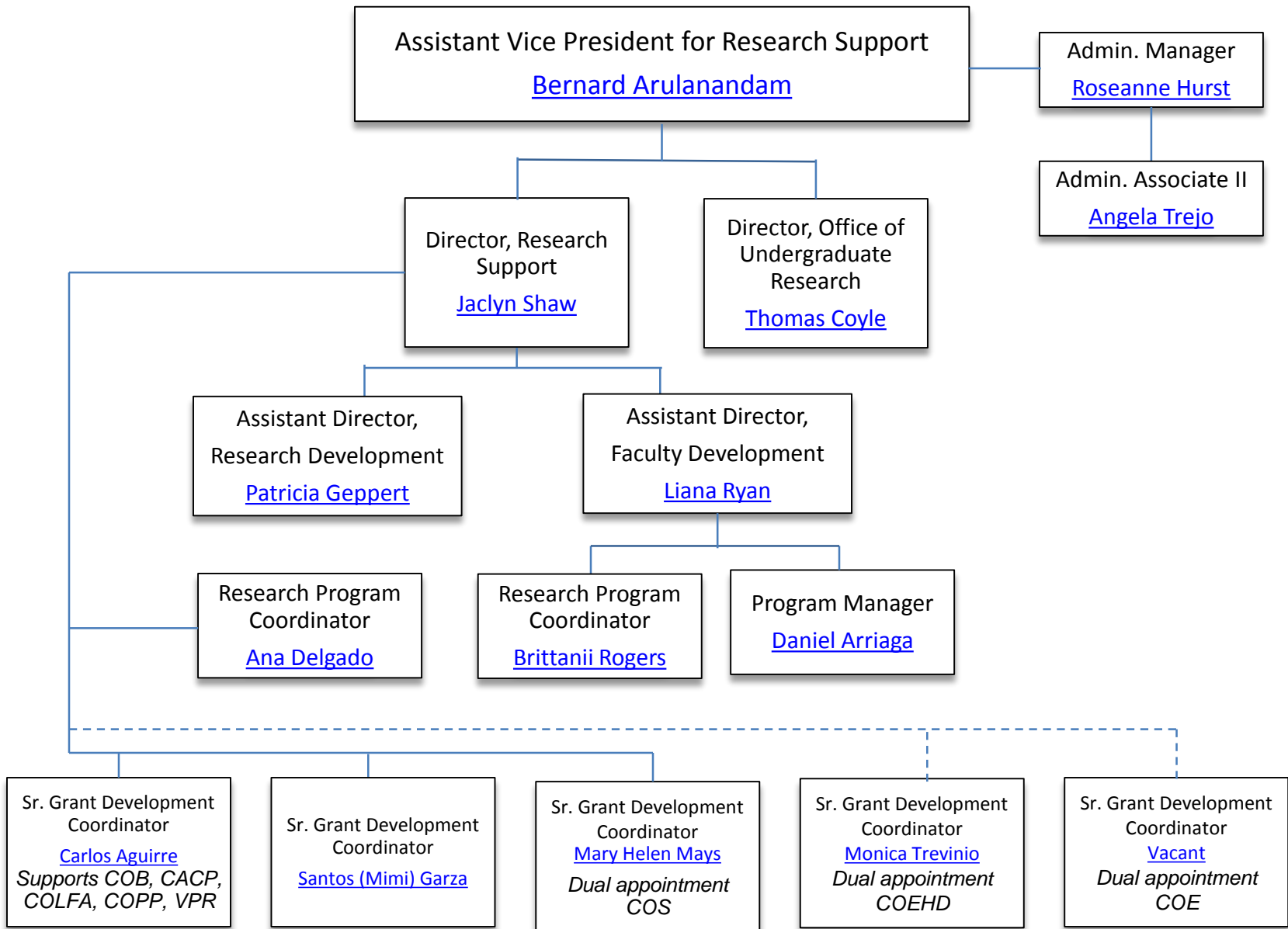
# Institute for Economic Development



# Office of Research Commercialization and Innovation



# Office of Research Support



# Office of Research Integrity

Associate Vice President for Research Integrity

[Michelle Stevenson](#)

Admin. Associate II

[Rachel Morrel](#)

Lab Safety  
(see Lab Safety Org Chart)

IRB Staff  
(see IRB Org Chart)

Administrative Analyst  
[Edith Ramos](#)

Director, Lab Animal  
Resource Center  
(LARC)  
[Marcel Perret-Gentil](#)

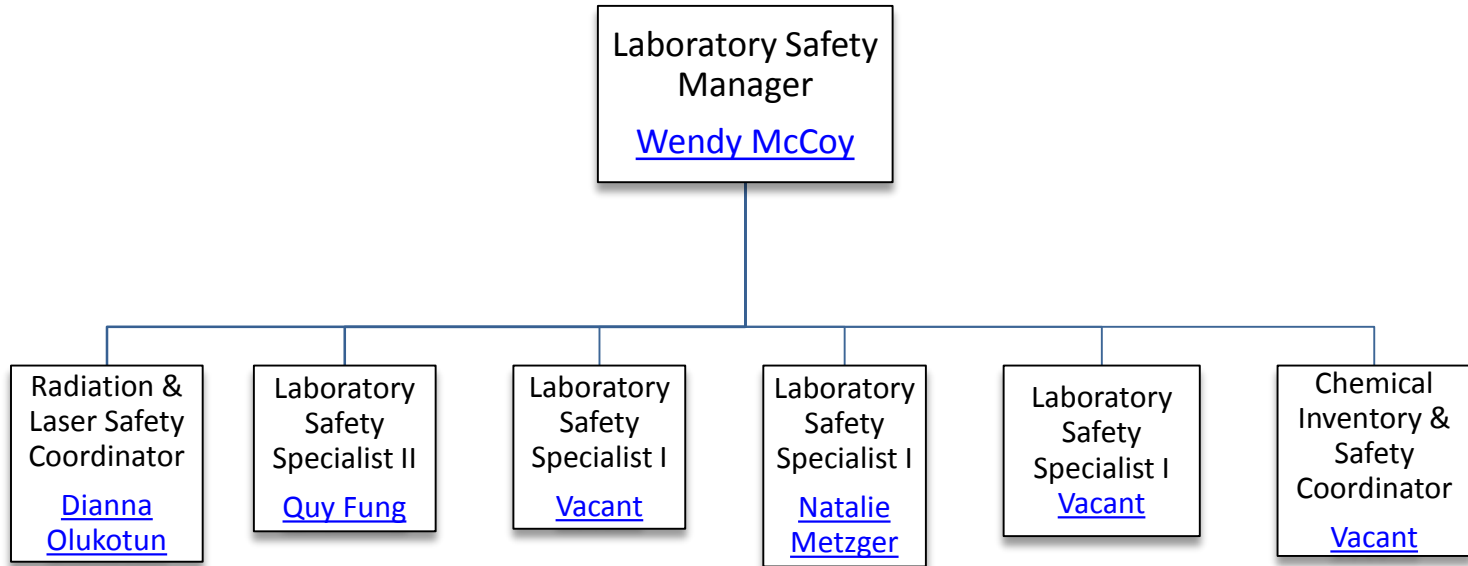
LARC Staff  
(see LARC Org Chart)

Research Security  
Manager  
[Robert Mitchell](#)

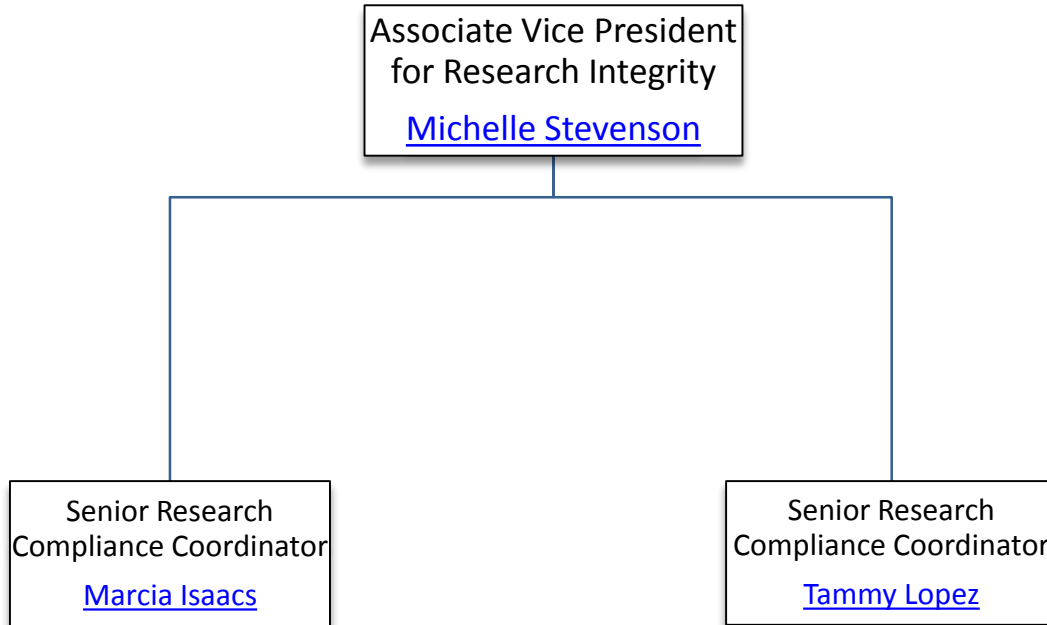
Laboratory Compliance  
Manager  
[Amanda Haley](#)

Sr. Research Compliance  
Coordinator  
[Yolanda Acosta](#)

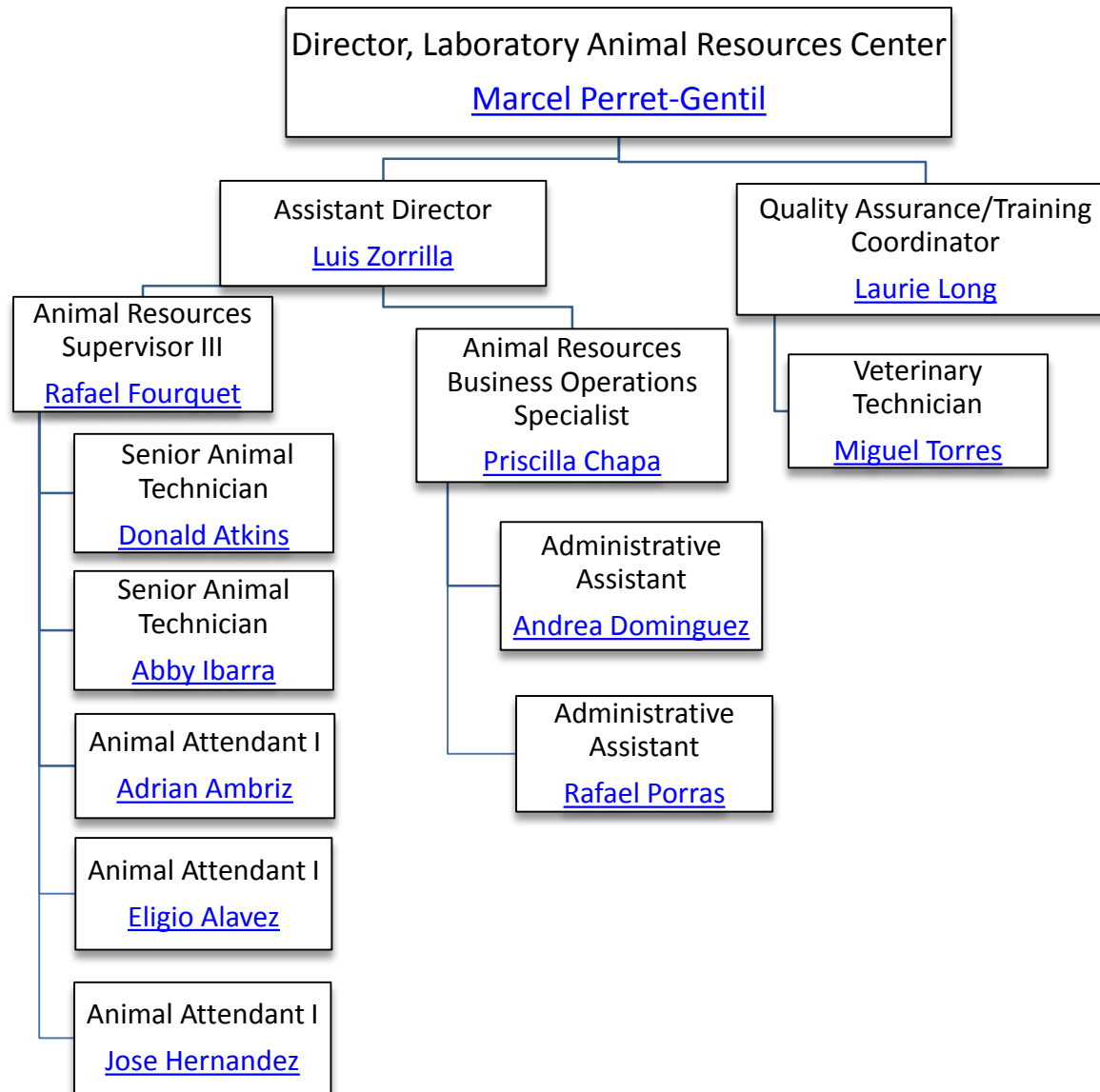
# Laboratory Safety



# Human Subject Research (IRB)

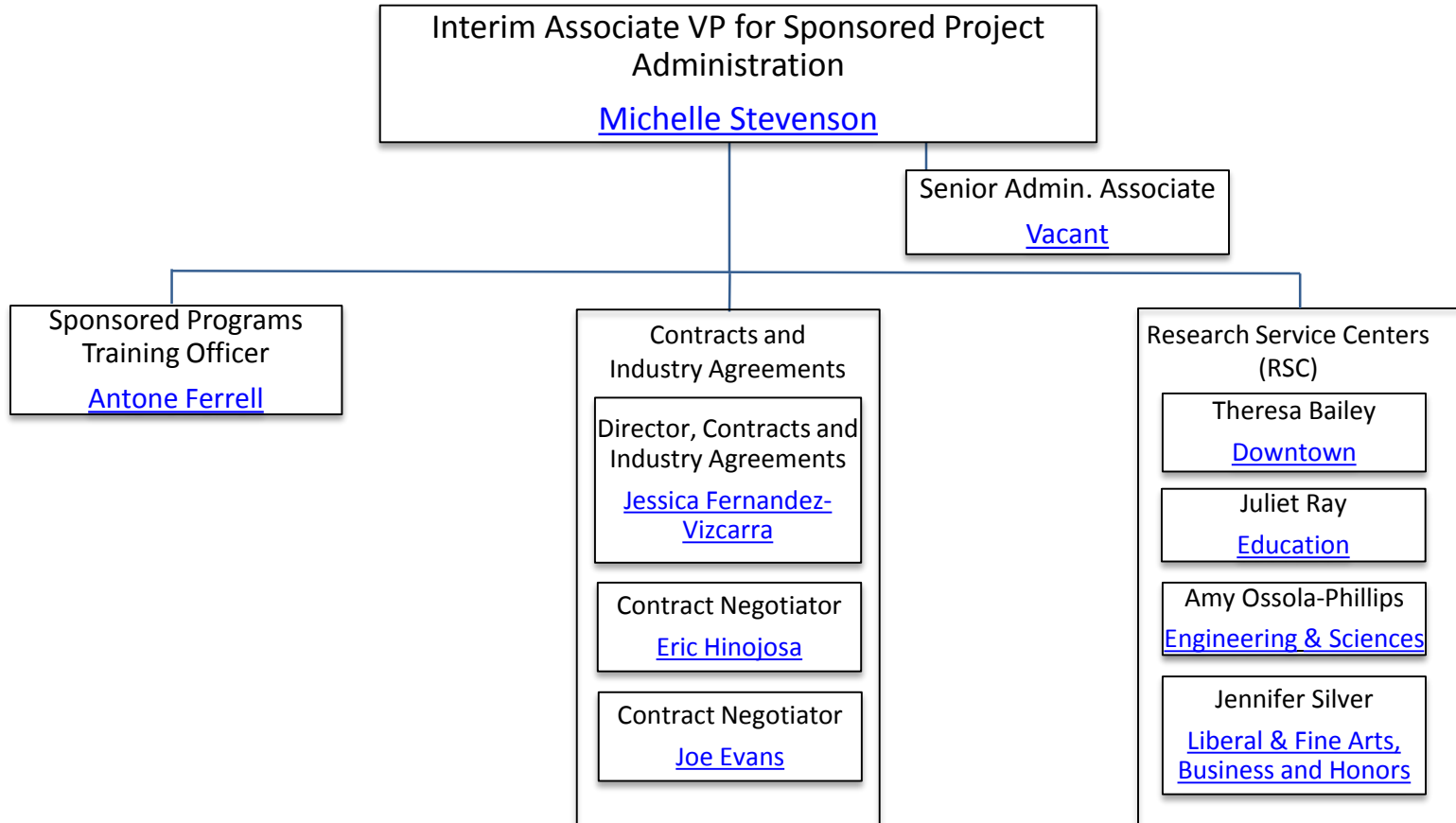


# Laboratory Animal Resources Center



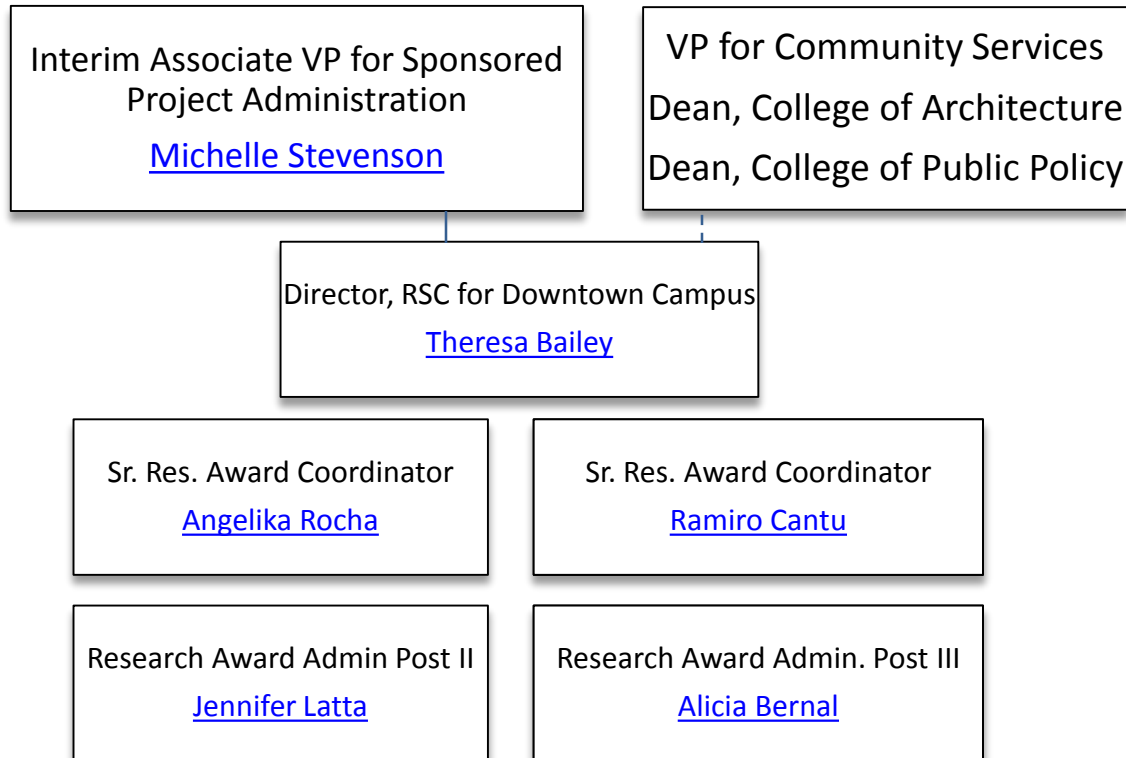


# Office of Sponsored Project Administration



# Office of Sponsored Project Administration

## Research Service Center for the Downtown Campus



# Office of Sponsored Project Administration

## Research Service Center for Sciences & Engineering

Interim Associate VP for  
Sponsored Project  
Administration  
[Michelle Stevenson](#)

Dean, College of Sciences  
Dean, College of Engineering

Director, RSC for Colleges of  
Sciences & Engineering  
[Amy Ossola-Phillips](#)

Assistant Director  
[Nanette McKinney](#)

Sr. Res. Award  
Coordinator  
[Christene Donithan](#)

Sr. Res. Award  
Coordinator  
[Mary Riedel](#)

Research Award  
Admin. Post III  
[Linda De La Cruz](#)

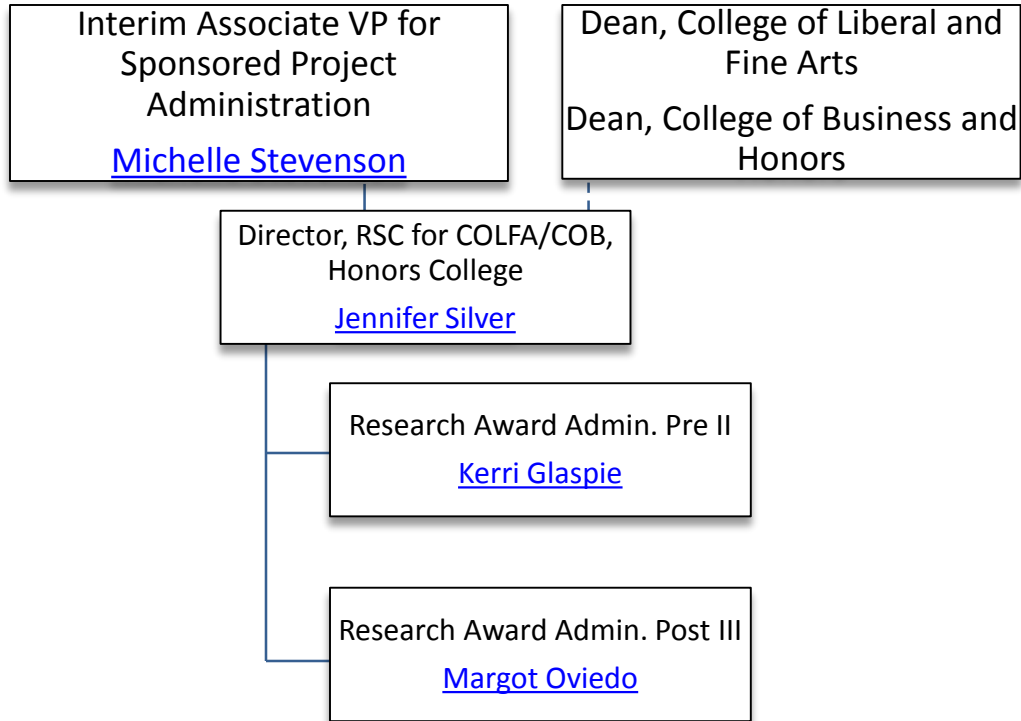
Research Award  
Admin. Pre II  
[Melanie Register](#)

Research Award  
Admin. Pre III  
[Andy Roybal](#)

Research Award  
Admin. Pre I  
[Lydia Thompson](#)

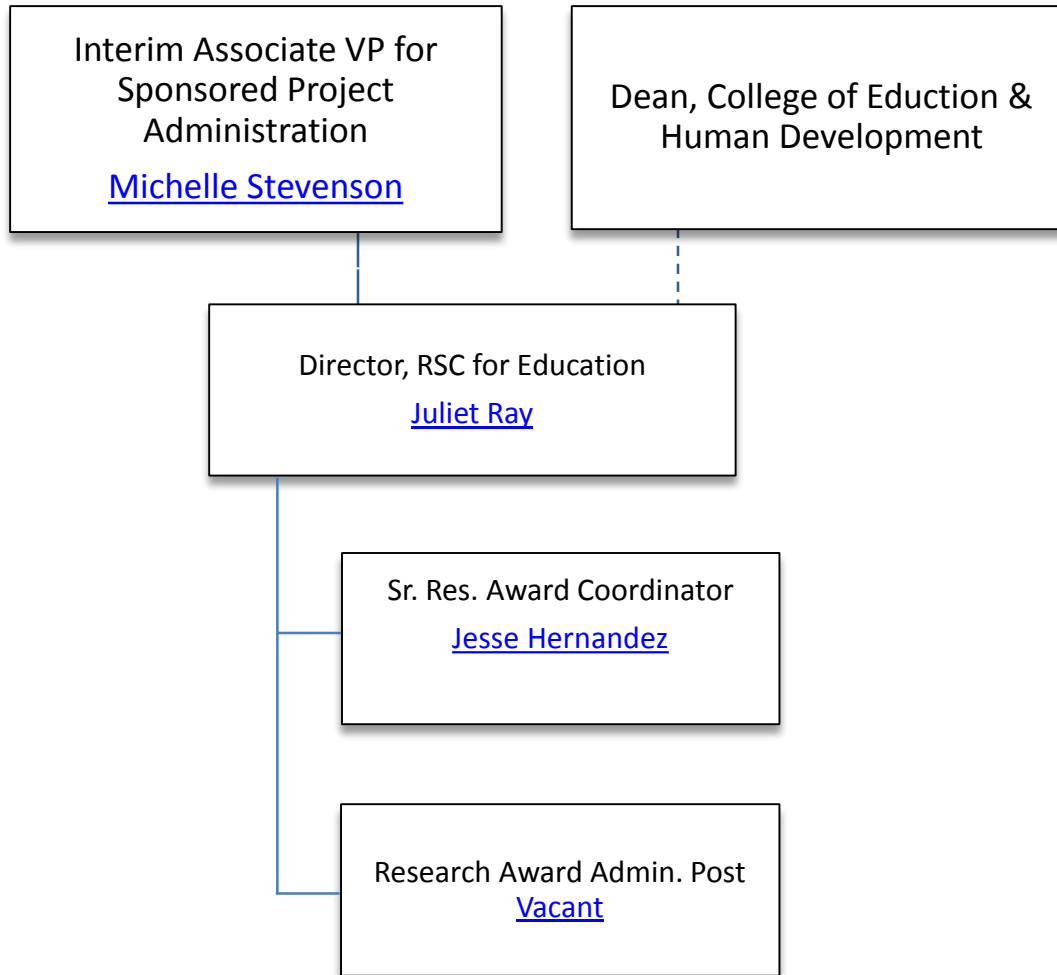
Research Award  
Admin. Post I  
[Cedric Williams](#)

# Office of Sponsored Project Administration – Research Service Center for the College of Liberal & Fine Arts, Business and Honors College



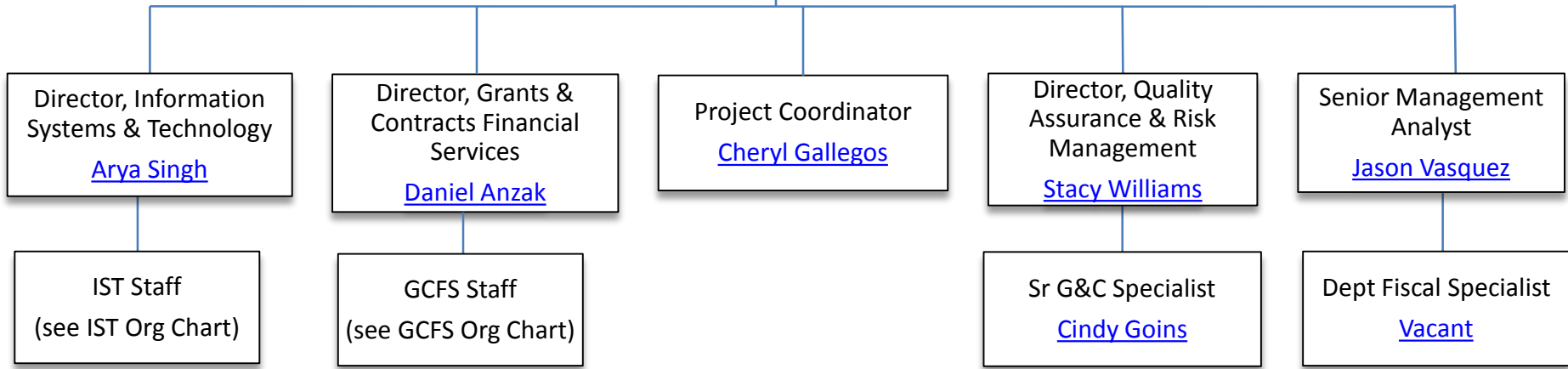
# Office of Sponsored Project Administration

## Research Service Center for the College of Education

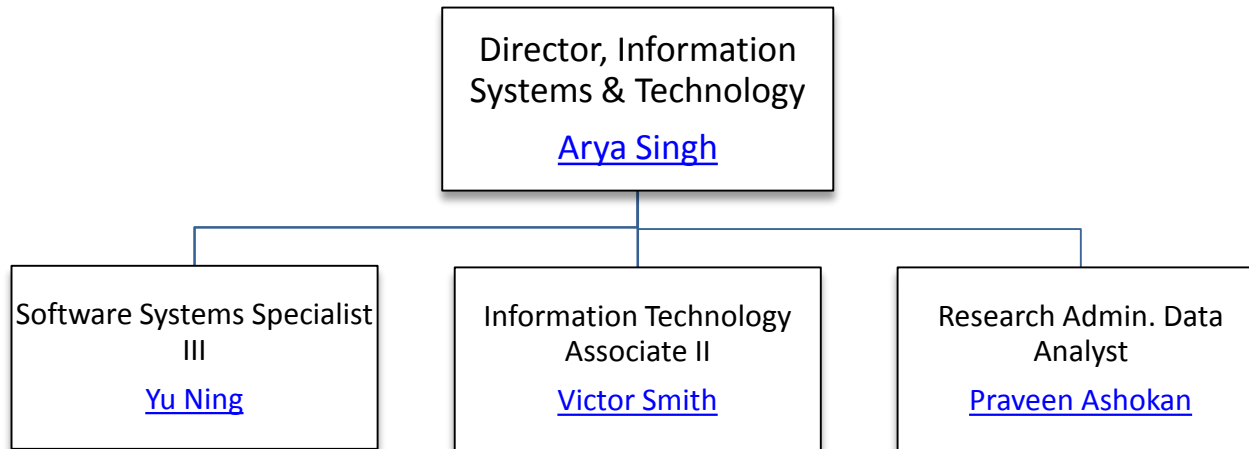


# Office of Research Finance and Operations

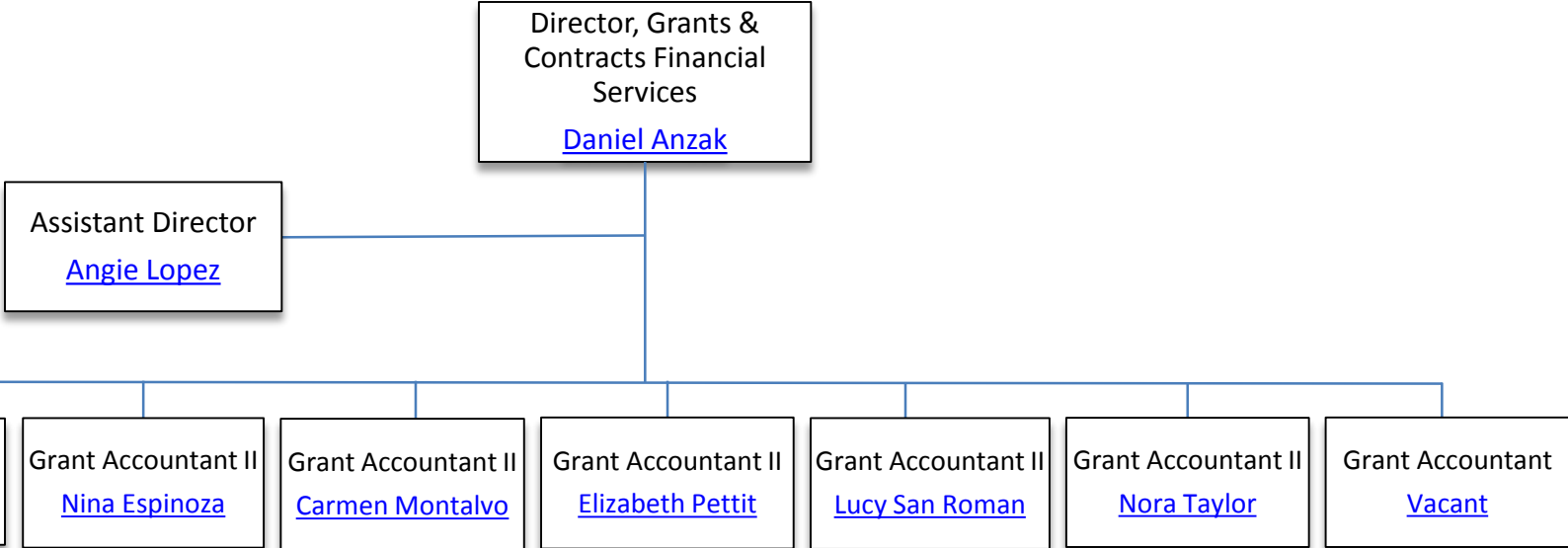
Assistant Vice President for Research Finance and Operations  
[Beth Manning](#)



# Information Systems and Technology (IST)



# Grants and Contracts Financial Services (GCFS)





# VPR Communications

